

3.1.5

Accessories for Lubrication

3.1.5 Accessories for Lubrication

Grease Gun Unit MG70

The Grease Gun Unit MG70 permits greasing of small and large LM Guides by simply using a special nozzle. Special attachments are available for small LM Guides. Depending on your model and work space, choose an appropriate attachment for efficient greasing.

The grease gun unit is provided with a slit through which you can check the remaining amount of grease. Grease comes in a 70-g bellows cartridge. You can replace the cartridge without dirtying your hands. Applicable greases include AFA, AFB, AFC, AFE, and AFF. Choose the type of grease that best suits your service conditions and the location where it will be used (see pages A-7 through A-13).

Table 4 Grease Gun Specifications

Discharge pressure	19.6 MPa max.
Discharge rate	0.6 m ℓ /stroke
Grease	70 g bellows cartridge (Lithium soap based grease No. 2)
Overall length	235 mm (without nozzle)
Weight	480 g (with nozzle and without grease)

Table 5 Applicable Model Numbers

Type N	LM Guide ... HSR12, HSR15, SR15, HRW17, SSR15, RSR15V, RSR15WV
Type P	RSR12V, HSR8, HSR10
Type L	RSR12V, HSR8, HSR10
Type H	LM Guide (models using M6F and PT1/8) Ball Screw

Note: In models of Types P and L other than those listed here, if greasing is difficult, their raceways can be lubricated with dripping oil.



Grease Gun Unit MG70

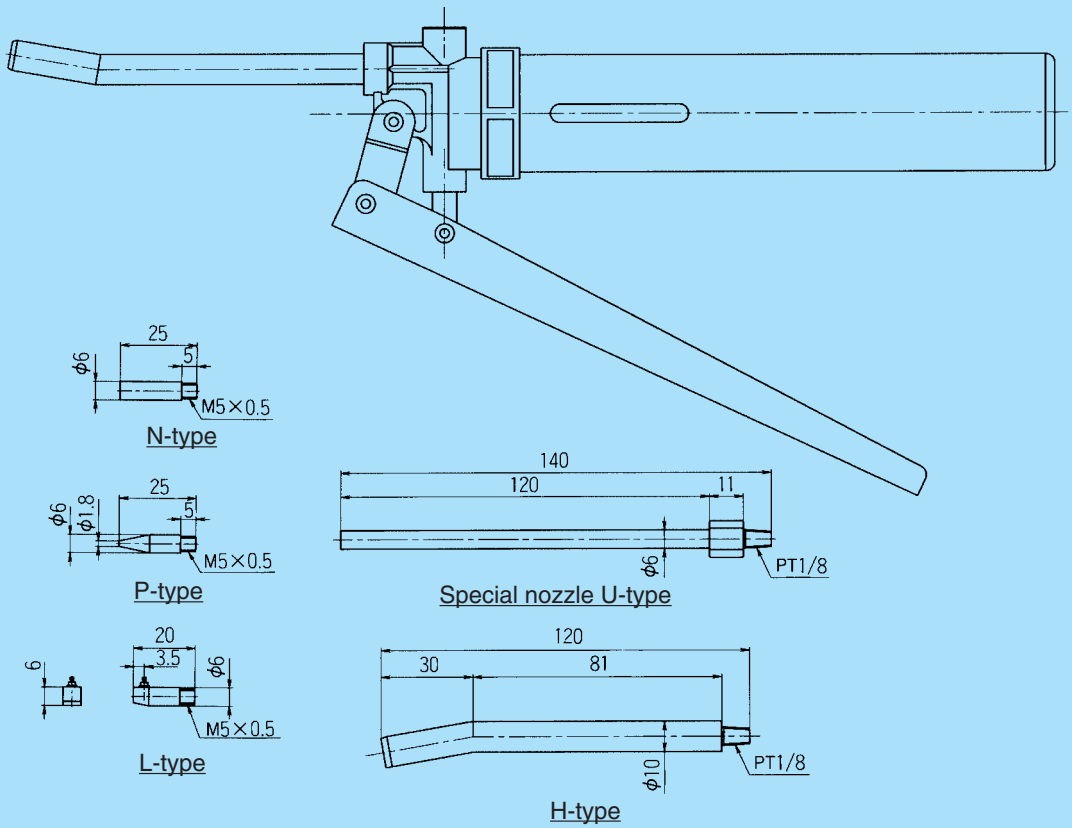
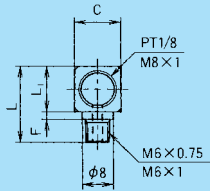


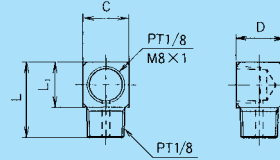
Fig. 9 Grease Gun Unit MG70

Special Plumbing Fixtures

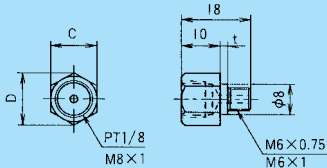
For integrated greasing and oil lubrication, special plumbing fixtures are available from THK. When ordering a linear motion system, if you provide us with information on the type of linear motion system, installation position, and piping orientation, we can deliver a system with the fittings installed.



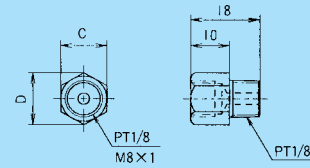
LF-A (PT1/8) $L = 20, L_1 = 12, F = 2, C = 12, D = 12$
 LF-B (M8x1) $L = 18.5, L_1 = 10, F = 2.5, C = 9.5, D = 18$
 LF-E (PT1/8), Size: the same as LF-A; set screws: $M6 \times 1$



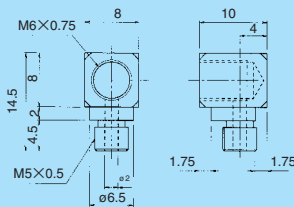
LF-C (PT1/8) $L = 20, L_1 = 12, C = 12, D = 12$
 LF-D (M8x1) $L = 18, L_1 = 10, C = 10, D = 18$



SF-A (PT1/8) $t = 2, C = 12, D = 13.8$
 SF-B (M8x1) $t = 2, C = 10, D = 11.5$
 SF-E (PT1/8), Size: the same as SF-A; set screws: $M6 \times 1$



SF-C (PT1/8) $C = 12, D = 13.8$
 SF-D (M8x1) $C = 10, D = 11.5$



LD ($M6 \times 0.75$)

Fig. 10 Special Plumbing Fixtures

Grease Nipples

THK provides various types of grease nipples needed for the lubrication of linear motion systems.

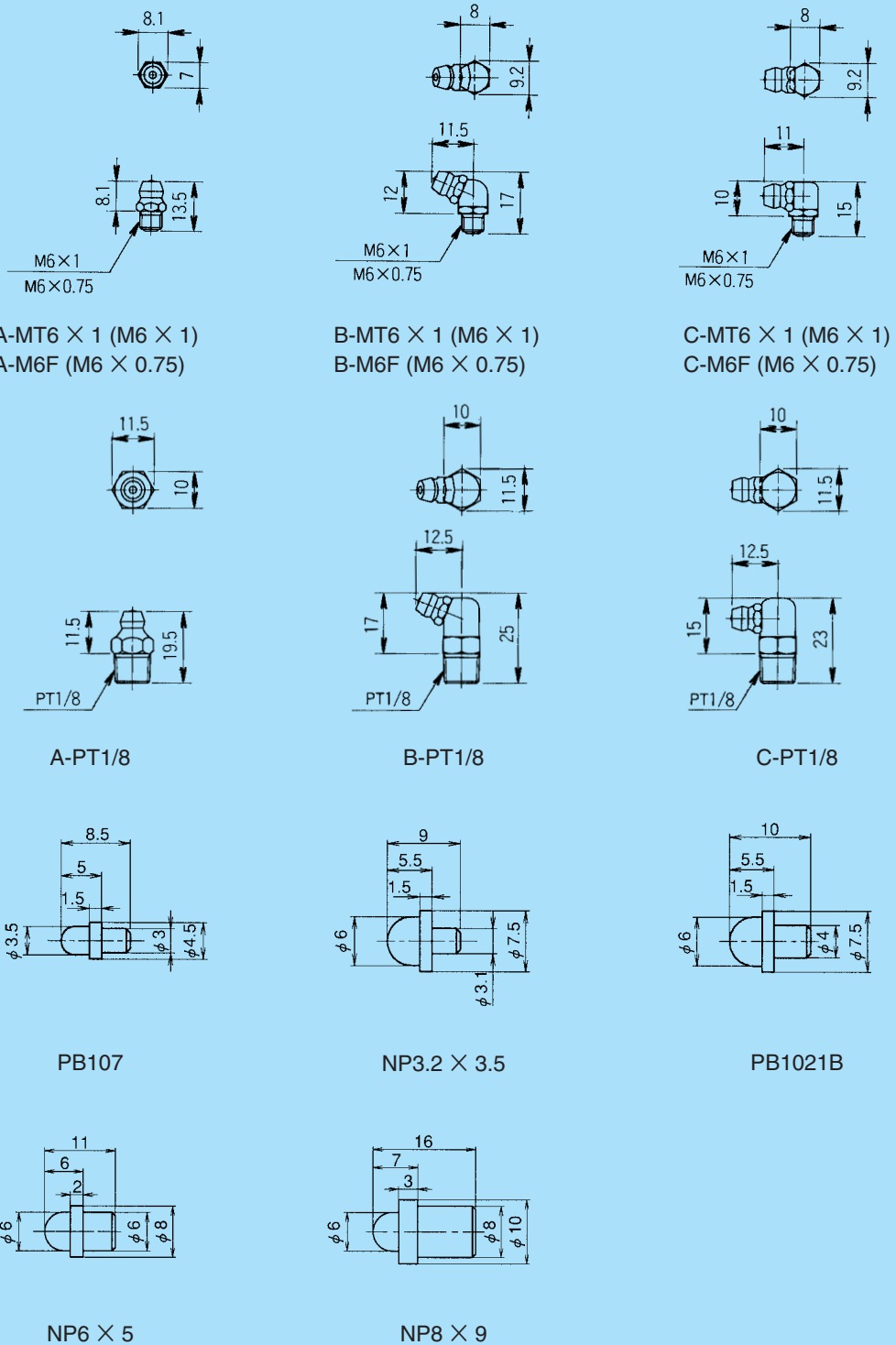


Fig. 11 Grease Nipples