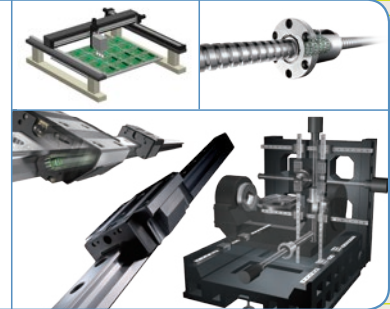


Company Overview

THK CO., LTD., manufactures and supplies vital machine components around the world. THK products help to convert slippage into controlled rotary motion, enabling parts of machinery to move smoothly, easily, and precisely with linear motion. As a company focused on creation and development, we have committed ourselves to developing a variety of products, including Linear Motion (LM) Guides, since our company's establishment in 1971.

Industrial Machinery Business

We have continued to expand the scale of our business by supplying LM Guides and other products that are essential components of industrial machinery such as machine tools and semiconductor production equipment. In addition, we are actively engaged in the manufacture and sale of electric actuators and unit products that combine many machine elements. In this manner, we are bringing increased precision, rigidity, and speed to the industrial machinery field, while at the same time addressing automation needs at the production line.



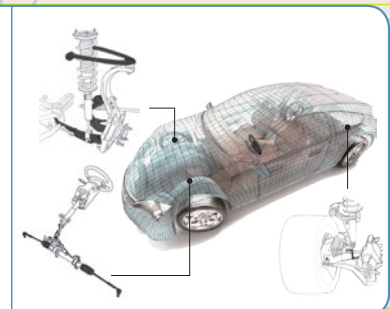
Industrial Machinery Business (Other)

We are committed to cultivating opportunities in consumer goods-related fields, such as seismic isolation and damping systems, medical equipment, aerospace, robotics, and renewable energy, as part of our efforts to promote the development of new business areas. To this end, we draw on the underlying strengths of our accumulated core linear motion system technology and ample expertise in the industrial equipment field. The applications of our compact and highly rigid products have expanded into many fields where they help people live safe and comfortable lives.

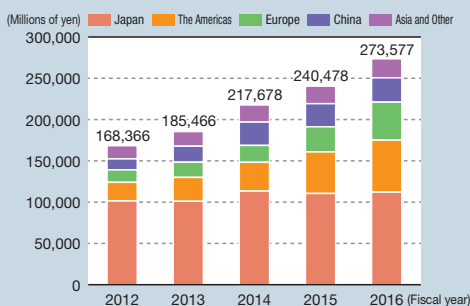


Automotive & Transportation Business

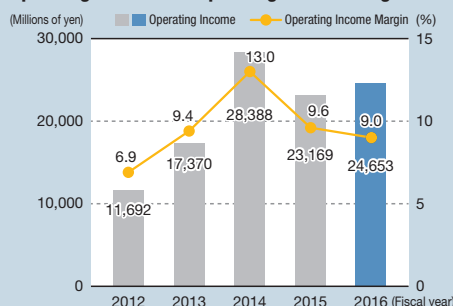
We develop and supply automotive components that support the basic functions of automobiles as a part of our Automotive & Transportation Business activities. We strive to make our mark as a supplier by promptly addressing changes in the global automotive market. In addition to the L&S (Linkage and Suspension) business we have worked to develop since our establishment, we are accelerating our efforts to expand the use of linear motion components in a variety of mechanisms such as next-generation steering, braking, and suspension systems.



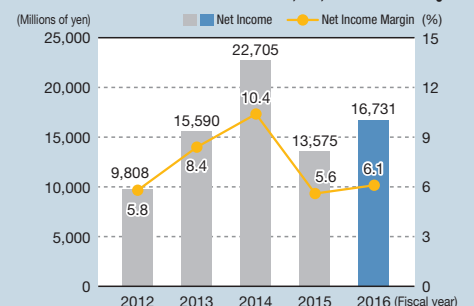
Net Sales



Operating Income and Operating Income Margin

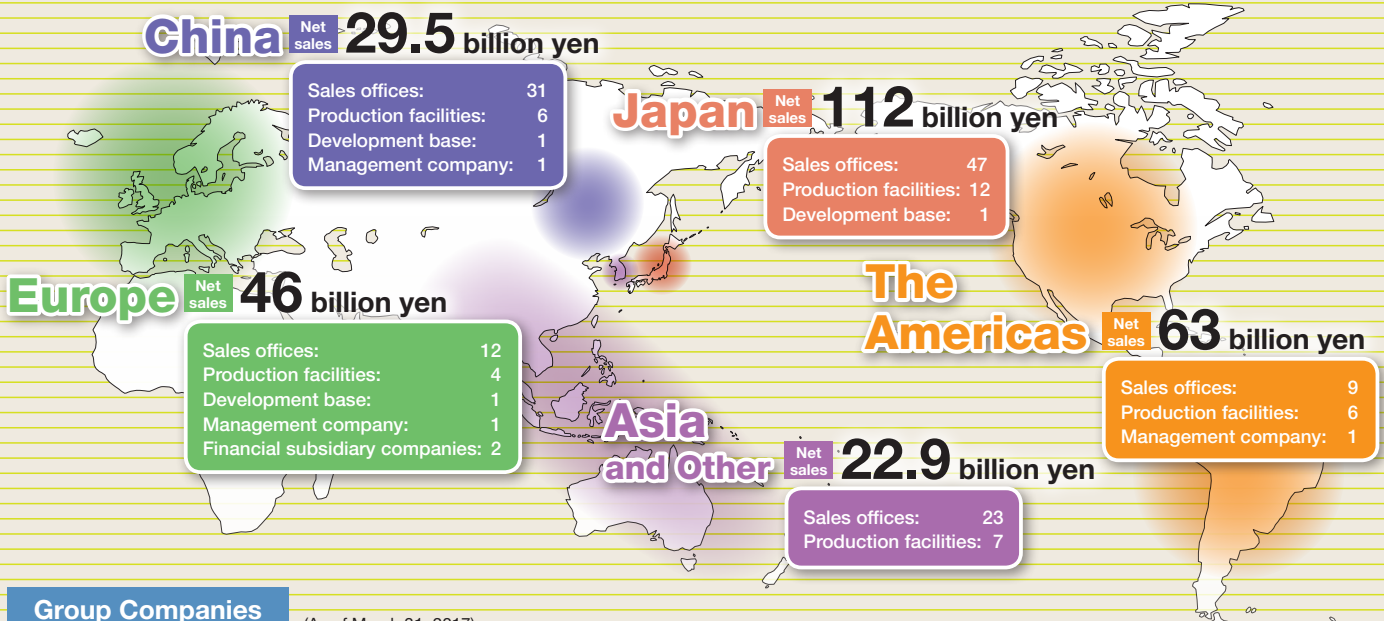


Net Income Attributable to Shareholders of THK CO., LTD., and Net Income Margin



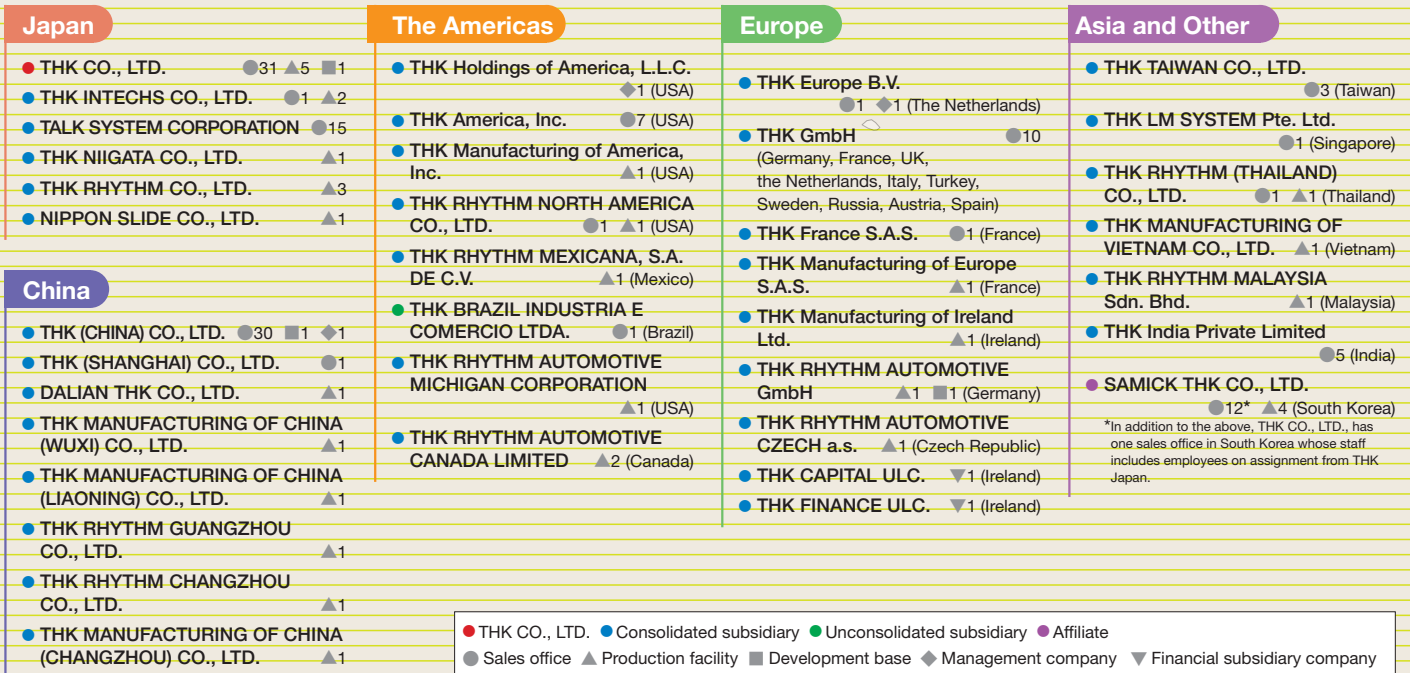


THK has established an integrated production and sales structure to produce and sell locally in four areas of demand: Japan, the Americas, Europe, and Asia. Over the past few years, we have been bolstering and expanding our sales network while strengthening our production capabilities across China and other newly emerging markets, where demand is expected to grow over the medium to long term. In developed countries, we are also working to expand our sales network in a bid to steadily capture demand amid expansion in our user base. Through these means, we are working diligently to promote substantial additional growth.

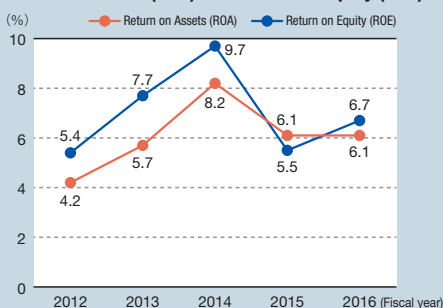


Group Companies

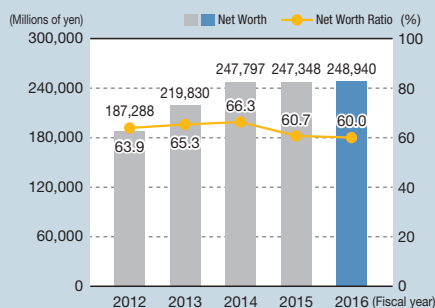
(As of March 31, 2017)



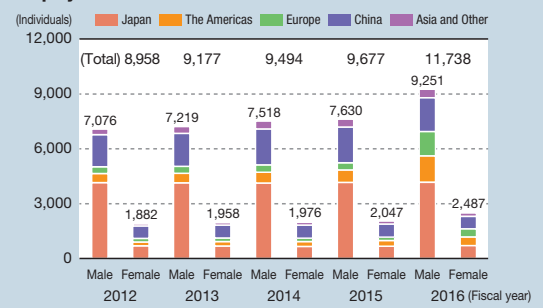
Return on Assets (ROA) and Return on Equity (ROE)



Net Worth and Net Worth Ratio



Employees



TRA gender composition data added beginning 2016