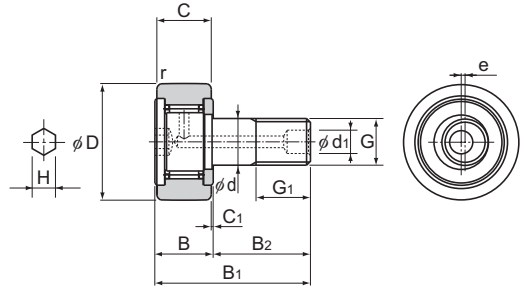


# Eccentric Cam Follower with Hexagon Socket Model CFH-A

Optional specifications		Symbol
Roller guide	With cage	No Symbol
	Full rollers	V
Material	Carbon steel	No Symbol
	Stainless steel	M
Seal	Without seal	No Symbol
	With seal	UU
Outer ring shape	Cylindrical outer ring	No Symbol
	Spherical outer ring	R



Stud diameter	Model No.	Main dimensions												
		Outer diameter	Outer ring width	Threaded			Overall length				Runout		Shoulder height f (Min.)	
d		D	C	G	G <sub>1</sub>	B	B <sub>1</sub>	B <sub>2</sub>	C <sub>1</sub>	d <sub>1</sub>	e	H	r <sub>min</sub>	
5	CFH 5-A	13	9	M5×0.8	7.5	10	23	13	0.5	—*	0.2	3	0.3	9.7
6	CFH 6-A	16	11	M6×1	8	12	28	16	0.6	—*	0.25	3	0.3	11
8	CFH 8-A	19	11	M8×1.25	10	12	32	20	0.6	—*	0.25	4	0.3	13
10	CFH 10-A	22	12	M10×1.25	12	13	36	23	0.6	—*	0.3	5	0.3	15
10	CFH 10-1-A	26	12	M10×1.25	12	13	36	23	0.6	—*	0.3	5	0.3	15
12	CFH 12-A	30	14	M12×1.5	13	15	40	25	0.6	6	0.4	6	0.6	20
12	CFH 12-1-A	32	14	M12×1.5	13	15	40	25	0.6	6	0.4	6	0.6	20
16	CFH 16-A	35	18	M16×1.5	17	19.5	52	32.5	0.8	6	0.5	6	0.6	24
18	CFH 18-A	40	20	M18×1.5	19	21.5	58	36.5	0.8	6	0.6	6	1	26
20	CFH 20-A	52	24	M20×1.5	21	25.5	66	40.5	0.8	8	0.7	8	1	36
20	CFH 20-1-A	47	24	M20×1.5	21	25.5	66	40.5	0.8	8	0.7	8	1	36
24	CFH 24-A	62	29	M24×1.5	25	30.5	80	49.5	0.8	8	0.8	8	1	40
24	CFH 24-1-A	72	29	M24×1.5	25	30.5	80	49.5	0.8	8	0.8	8	1	40
30	CFH 30-A	80	35	M30×1.5	32	37	100	63	1	8	1	8	1	46
30	CFH 30-1-A	85	35	M30×1.5	32	37	100	63	1	8	1	8	1	46
30	CFH 30-2-A	90	35	M30×1.5	32	37	100	63	1	8	1	8	1	46

Note) THK also manufactures types that have a driver groove and a greasing hole on the head. (Model numbers of types with a driver groove do not include symbol "A" in the end.)

For information on accuracy standards, please refer to **A19-14**.

Those models marked with "\*" do not have a greasing hole and cannot be replenished with grease.

## Model number coding

**CFH24-1 V M UU R -A N**

Model No.

No symbol: With cage

V : Full-roller Type

No symbol: Carbon steel

M : Stainless steel

no symbol: without seal

UU : With seal

No Symbol : No grease nipple

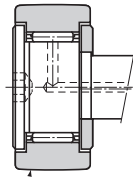
N : Dedicated grease nipple included (See **A19-39**)

Stud head with a hexagon socket

No Symbol : Cylindrical outer ring

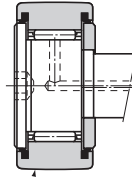
R : Spherical outer ring

Note) Full-roller Type is applicable for Stud Diameter 6 to 30.



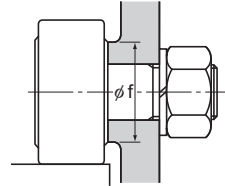
R500 (CFH18 or lower)  
R1000 (CFH20 or higher)

Model CFH-R



R500 (CFH18 or lower)  
R1000 (CFH20 or higher)

Model CFH...UUR



Unit: mm

Basic load rating					Maximum permissible load	Track load capacity		Rotational speed limit *		Mass	
With cage		Full rollers		F <sub>0</sub> kN		Cylindrical outer ring kN	Spherical outer ring kN	With cage min <sup>-1</sup>	Full rollers min <sup>-1</sup>	With cage g	Full rollers g
C kN	C <sub>0</sub> kN	C kN	C <sub>0</sub> kN								
3.14	2.77	—	—	1.42	2.25	0.53	29000	—	10.5	—	
3.59	3.58	6.94	8.5	2.11	3.43	1.08	25000	11000	18.5	19	
4.17	4.65	8.13	11.2	4.73	4.02	1.37	20000	8700	28.5	29	
5.33	6.78	9.42	14.3	5.81	4.7	1.67	17000	7200	45	46	
5.33	6.78	9.42	14.3	5.81	5.49	2.06	17000	7200	60	61	
7.87	9.79	13.4	19.8	9.37	7.06	2.45	14000	5800	105	107	
7.87	9.79	13.4	19.8	9.37	7.45	2.74	14000	5800	115	117	
12	18.3	20.6	37.6	17.3	11.2	3.14	10000	4500	205	207	
14.7	25.2	25.2	51.3	26.1	14.4	3.72	8500	3800	295	300	
20.7	34.8	33.2	64.8	32.1	23.2	8.23	7000	3400	525	530	
20.7	34.8	33.2	64.8	32.1	21	7.15	7000	3400	450	455	
30.6	53.2	46.7	92.9	49.5	34.2	10.5	6500	2900	915	925	
30.6	53.2	46.7	92.9	49.5	39.8	12.9	6500	2900	1150	1160	
45.4	87.6	67.6	145	73.7	52.6	14.9	5000	2300	1880	1890	
45.4	87.6	67.6	145	73.7	56	16.1	5000	2300	1950	1960	
45.4	87.6	67.6	145	73.7	59.3	17.3	5000	2300	2000	2010	

Note1) ○: Model CFH5M-A is available only in carbon steel.

Note2) The rotation speed limit value in the table (\*) applies to models that have no seal and use grease lubrication. With those models using oil lubrication, up to 130% of this value is permitted. With those attached with seals, up to 70% of this value is permitted.

• Eccentric type (model CFH) variations

Type in which the stud head side and screw side are tapped for pipe fitting (model CFHT)

Type with a hexagon socket in the stud head side (model CFHT-A) (suitable for stud diameters of 12 mm or more)

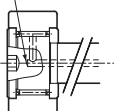
Type with a hexagon socket in the stud screw side (model CFHT-B) (suitable for stud diameters of 12 mm or more)

Contact THK for information on other variations.

Note3) Models CFH24A through CFH30-2A (excluding those made of stainless steel) are equipped with a plug fitted into a through hole connecting the oil hole to the base of the hexagonal socket (see  $\phi d$ , and  $\phi d_1$  in the figure on **A19-24**), to keep grease from leaking out of the socket. When applying grease, make sure the plug is not dislodged from the base of the hexagonal socket by excessive pressure.

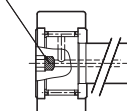
During greasing, take care to ensure that the plug is not forced out of the hexagon socket by excessive pressure.

Oil hole is a blind hole



CFH12A to 20-1A  
CFH12AM to 30-2AM

Plug pressed into hexagon socket to render oil hole as a blind hole



CFH24A to CFH30-2A