

**A Sensoroid and Smart Seat that Enable a Person's Health and the Conditions of the Surrounding Environment to be Visualized to be Put on Exhibit at CES 2018**



THK CO., LTD. (Main Offices: 2-12-10 Shibaura, Minato-ku, Tokyo; CEO: Akihiro Teramachi) announced that they will be exhibiting product prototypes at CES, the world's largest consumer electronics trade show, to be held on January 9th to 12th, 2018, in Las Vegas, Nevada (USA).

At this exhibition, THK will display a humanoid sensoroid that is able to grasp various conditions of the surrounding environment. Sensors can be embedded all over the object, thus enabling the environment in which a person is situated to be visualized on the basis of a diversity of factors. A "smart" sensing seat that measures a person's respiration, heart rate, stress levels, and more will also be on display.

■ **Exhibition Outline**

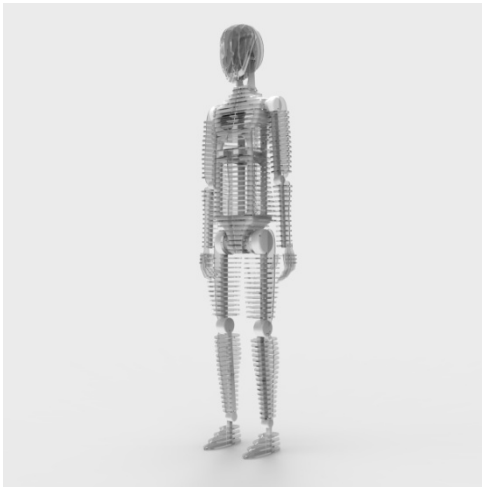
Name: CES (Consumer Electronics Show)  
Dates: January 9 (Tue) to 12 (Fri), 2018  
Venue: Sands Expo & Convention Center  
201 Sands Ave, Las Vegas, NV 89169, U.S.A.  
Booth Number: 41358  
Booth name: sensingnet Inc.



**Questions and Inquiries:**

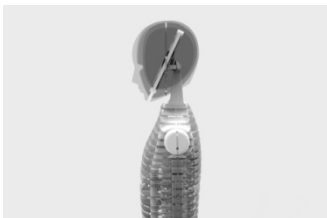
Takuya Sakamoto, Global Marketing Department, THK CO., LTD.  
2-12-10 Shibaura, Minato-ku, Tokyo 108-8506 JAPAN  
Phone: +81 3-5730-3845 Fax: +81 3-5730-3916 E-mail: [taku.sakamoto@thk.co.jp](mailto:taku.sakamoto@thk.co.jp)  
URL: [www.thk.com/eng](http://www.thk.com/eng)

## “ATMOS” sensoroid



### ■ Design

- Designed as a silhouette of the human body formed in grey acrylic around a white framework.
- By sandwiching various sensor modules between the sheets of acrylic, it is possible to optimize this product/object for a variety of applications.
- THK’s FBL27D slide rails are used in the chest area, and a microcomputer or other device can be installed as well. THK’s RF77F cross-roller ring is also used for/in the waist.



### ■ Prototype details

- Transparent boards/sheets are aligned at a 15-mm pitch, and sensor modules can be easily situated between them.
- Sensor data is visualized on a separate monitor.

## “ARGUS MOVA” smart sensing chair



### ■ Design

- With white shell-type seats and legs made of transparent acrylic, this seat offers a futuristic feel that seems to float in the air.
- Its shape takes into consideration this product’s deployment as seats in automobiles, trains, airplanes and other applications.
- High-sensitivity piezo sensors are incorporated into the seat portion, enabling heart beat, respiration rate, and more to be detected based on minute movements of the human body.

### Questions and Inquiries:

Takuya Sakamoto, Global Marketing Department, THK CO., LTD.

2-12-10 Shibaura, Minato-ku, Tokyo 108-8506 JAPAN

Phone: +81 3-5730-3845 Fax: +81 3-5730-3916 E-mail: [taku.sakamoto@thk.co.jp](mailto:taku.sakamoto@thk.co.jp)

URL: [www.thk.com/eng](http://www.thk.com/eng)