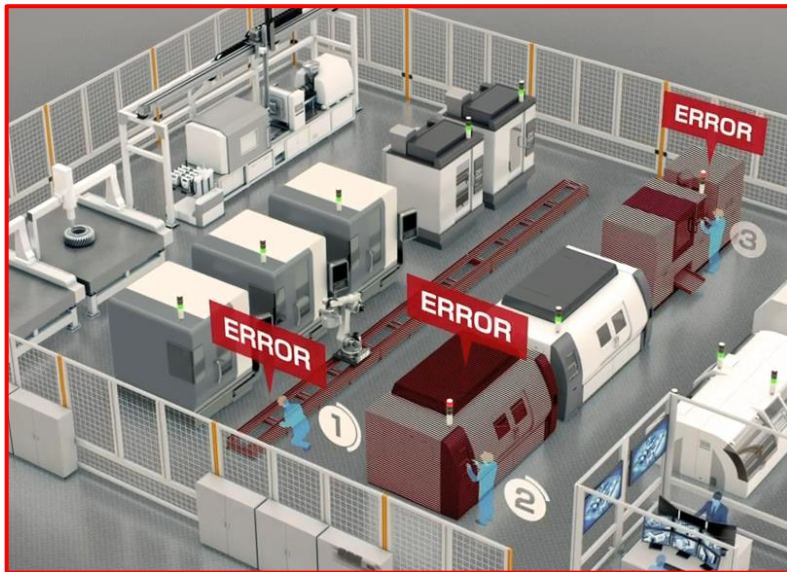


**Add peace of mind with predictive failure detection
to prevent a sudden manufacturing line stop**



Unplanned maintenance!

Solution



Challenges in the manufacturing Line

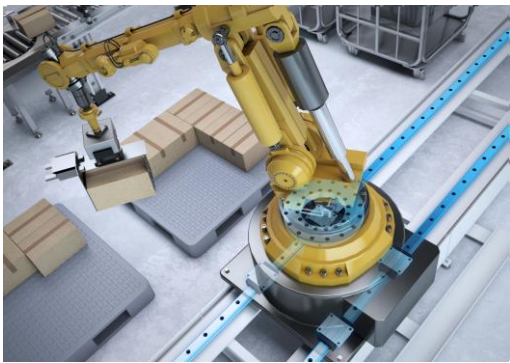
● In a Tire Manufacturing Line (Automotive Industry)



- Linear components (LM Guide, Ball Screw, Actuators) suddenly fail **due to a harsh environment**.
- The sudden stop of a machine or a process results in a critical impact **by stopping the whole manufacturing line**.



● In a Long Process Transferring Robot



- Jointed LM Guides are used in a long process transferring lines.
- If an unexpected problem occurs with the LM guides, **it will take long time to refit the jointed LM rails**.
- During this non-planned long maintenance period, **this process can not be used**.



● In a Food Manufacturing Process (Food Industry)



- Linear components are moving above a food manufacturing process.
- Complete wash downs are common in the food industry but it also has the potential **to wash out the lubricant from the linear components**.
- Mechanical component damage may result **in small metal particle contamination of the food**.



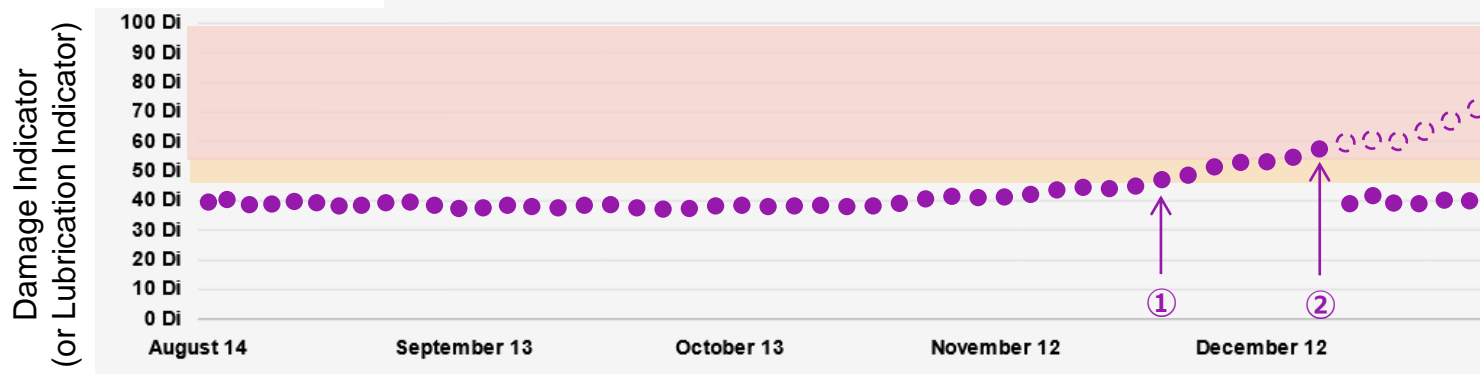
Predictive Maintenance for key components to minimize “down time of the manufacturing line” ?

A Manager of the manufacturing line

Solution : Visualize Lubrication & Damage



Trend graphs



Maintenance log

①



November

No changes



No problem



LM guide replac...

No comment



Details



No action

LM Guide stock has been checked.
(for next replacement)

②



December

Out of tolerance



Machine stop



LM guide replac...

No comment



Details



LM Guide replacement
Finish in ONLY 2 hours



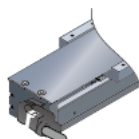
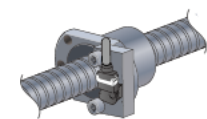
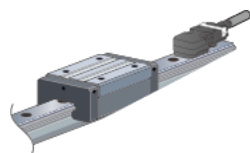
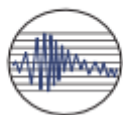
Minimize the down time of the complete manufacturing line.

By OMNI edge for Linear Components

Basic

On-premise

Vibration data

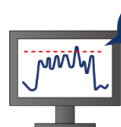


OR



Values indicating damage

Values indicating lubrication

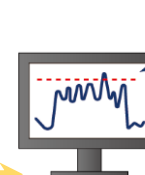


Secure transmission

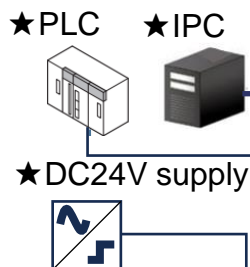
GOLD

THK Cloud

Latest Analysis
ADV



Specification & Service Plan

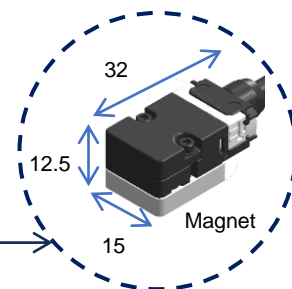


1. LM Guide**

2. Ball Screw**

3. Actuator**

Vibration Sensor



Basic

Hardware (1 SET)

- 1 Amplifier
- 3 Vibration Sensors
- 3 Extension cables

Amplifier

*USB memory

* Only for D4

Extension Cable

5 / 10 / 15 / 20m

Input	Voltage	DC24V
	Current	Max. 0.9A
	Sensor channel	Max. 3 ch
	Trigger	DI0 - DI3 (Max. DC30V)
Feature value identification (Analysis)		Di : Damage indicator
		Li : Lubrication indicator
Output	Communication	DF (Connect to THK Cloud)
		D4 : FTP
		*Store in USB ★Export to IPC (FTP server)
EU Declaration		CE / EMC (2014/30/EU)

GOLD

THK Cloud Service

- 1x Router + SIM card
- Visualization
- E-mail notification
- Advice
- ADV



Router

Input	Voltage	DC24V		
	Current	Max. 0.2A		
Country	GL1	Austria	Germany	Romania
		Belgium	Hungary	Spain
		Bulgaria	Ireland	Sweden
		Croatia	Italy	Turkey
		Denmark	Netherlands	United Kingdom
		France	Poland	
	GL3	Czech Republic	Norway	Slovenia
		Finland	Portugal	Switzerland
		Lithuania	Slovakia	
EU Declaration		CE / RD (2014/53/EU)		

★ Equipment shall be prepared by users.

** Component driving conditions shall be checked.

Model Number Coding

TSS-A3-DF-123-CS05-CS05-CS05-GL1

Amplifier Communication

- DF : THK cloud
- BASIC + GOLD plan
- D4 : on-premise
- BASIC plan

Monitor Components

- 1 : Linear Bearing
- 2 : Ball Screw
- 3 : Actuator
- N : Not connected

Cable Length

- 05 : 5m
- 10 : 10m
- 15 : 15m
- 20 : 20m
- N : Not connected

Router country

- GL1 : } for DF
- GL3 : } See table above.
- N : for D4

THK GmbH

Europe Headquarters

Kaiserswerther Straße 115

D-40880 Ratingen

Phone +49-2102-7425-555

info.ehq@thk.eu

www.thk.com

- Europe Headquarters
- Düsseldorf Office
- Stuttgart Office
- U.K. Office
- Italy Office
- Sweden Office
- Austria Office
- Spain Office
- Turkey Office
- Prague Office
- Moscow Office
- THK Europe B.V.
- Eindhoven Office
- THK France S.A.S.
- Paris Office

Phone: +49-2102-7425-555
Phone: +49-2102-7425-0
Phone: +49-7141-4988-500
Phone: +44-1384-471550
Phone: +39-02-9901-1801
Phone: +46-8-445-7630
Phone: +43-7229-51400
Phone: +34-93-652-5740
Phone: +90-216-362-4050
Phone: +420-2-41025-100
Phone: +7-495-649-80-47

Phone: +31-40-290-9500

Phone: +33-1-7425-3800