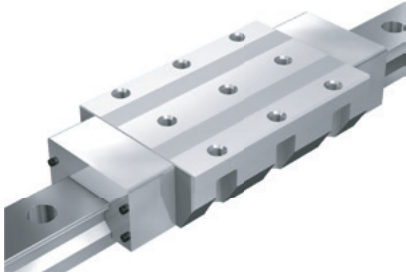
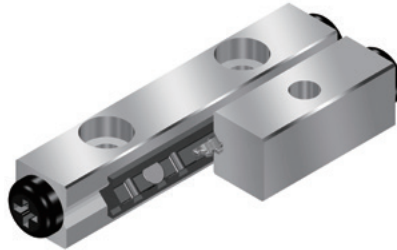


New Products



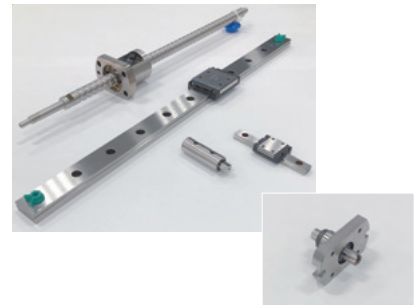
Roller Guide Model SRN Full-Roller Compatibility

An exceptionally robust full-roller model has been added to the lineup. This product helps machine tools demonstrate a high level of performance.



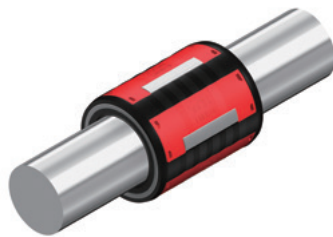
Cross-Roller Guide Model VRG

This product achieves light, smooth motion by not recirculating the rolling elements. THK's proprietary rack and pinion mechanism prevents cage misalignment and provides stable motion.



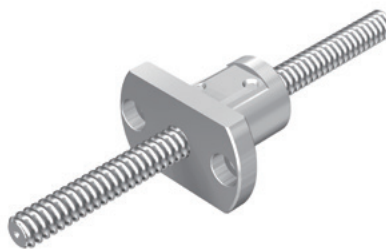
High-Performance Non-Magnetic Products

As non-magnetic products with optimal features for bearings, these items are ideal for electron beam lithography systems and electron microscopes.



Press Fit Type Linear Bushing Model LMHB

Designed to be assembled by press fitting the unit into a housing, this product helps to make machinery more compact and reduces installation time.



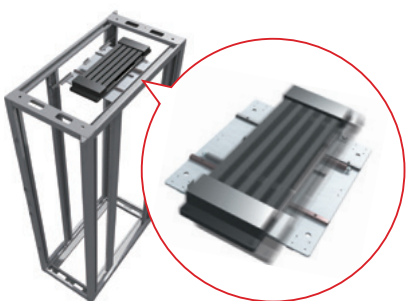
Miniature Ball Screw Lineup Expansion

THK has expanded its highly requested lineup for semiconductor manufacturing equipment, electronic component mounting machines, and medical equipment, which has seen a very favorable shift in demand.



LM Guide Actuator Model KR-RL

This right/left ball screw enables open-and-close movements with a single motor, allowing for use in a variety of orientations and applications.



Seismic Damping System for Servers Model TRMD

As it is mounted to the top of server racks as a seismic damping system, this product can be installed while the servers are running.



SEED-R7 Series

These three highly versatile unit types can be used for a variety of purposes, enabling fast, simple, and inexpensive setup of service applications.



Adaptive Hand Series Model TNH

As a general-purpose robot hand capable of adapting to the shape of workpieces to suction or grip them for stable transport, this product is an all-around solution for a variety of industries.