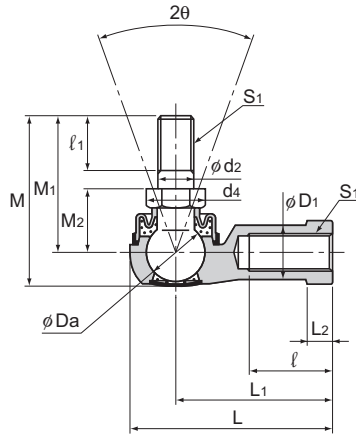


Model AL



Model No.	Outer dimensions			Threaded S ₁ JIS Class 2	Holder dimensions					
	Length L	Diameter D	Height M		L ₁	ℓ	L ₂	D ₁	D ₂	W 0 -0.3
AL 4D	24.5	13	20	M4×0.7	18	8	4	7.5	9.5	8
AL 5D	34.5	15	26.7	M5×0.8	27	15	4	9	12	10
AL 6D	38.5	17	32.6	M6×1	30	16	5	10	13	11
AL 8D	46	20	38.6	M8×1.25	36	19	6	13	16	14
AL 10D	56	26	46.3	M10×1.25	43	23	7	15.5	19	17
AL 10BD	56	26	52.3	M10×1.5	43	23	7	15.5	19	17

[Material]

Holder : A-1 alloy (see A22-5)
 Ball shank : Lightly Carburized Carbon Steel Ball:
 650 Hv or higher
 Shank S35C (20 to 28 HRC)
 Chromate treatment
 Boot : NBR special synthetic rubber

[Tolerance of the Mating Hole of the Ball Shank]

H10 is recommended.

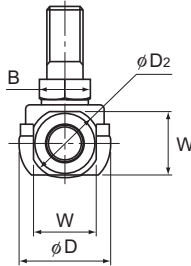
[Spherical Clearance]

Perpendicular to the axis : 0.02 to 0.06mm
 Axial direction : 0.3mm or less

Model number coding

AL6 D L
 Model number | With boot attached | Screw symbol

Screw symbol	No symbol	L
Holder unit set screw	Right-hand	Left-hand
Ball shank	Right-hand	

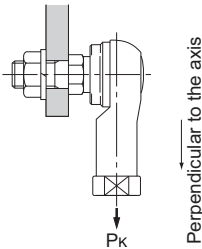


Unit: mm

Ball shank dimensions							Ball diameter Da	Permissible tilt angles 2θ°	Applied static load Cs N	Yield-point strength Pk N	Mass g
d ₂ h9	M ₁	M ₂ ±0.3	ℓ ₁	Hexagon B 0 -0.3	d ₄						
4	15	7	6	7	8.1	7.938	40	4510	1370	7	
5	21	10	8	8	9.2	9.525	40	6470	2250	12	
6	26	11	11	10	11.6	11.112	40	9900	3920	18	
8	31	14	12	12	13.8	12.7	40	12500	6570	32	
10	37	17	15	14	16.2	15.875	40	18300	11300	65	
10	43	17	21	14	16.2	15.875	40	18300	11300	68	

[Yield-Point Strength]

It indicates the strength in the direction shown in the figure below.



[Lubrication]

Lithium soap group grease No. 2 is contained in the boot and the cap.

[Identification of Left-hand Thread]

If the female threading is left-handed, its identification depends on the marking.

Threaded	Identification
	Cap marking
Right-hand	—
Left-hand	"L" mark