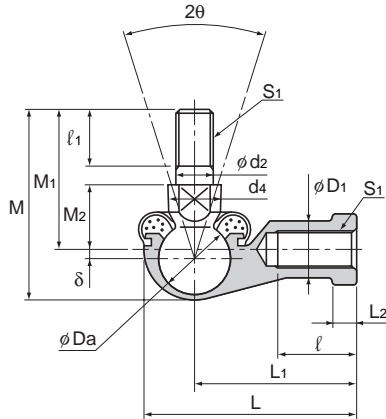


Model RBL



Model No.	Outer dimensions			Threaded S ₁ JIS Class 2	Holder dimensions					
	Length L	Diameter D	Height M		L ₁	L ₂	ℓ	D ₁	D ₂	W 0 -0.3
RBL 5D	35	16	29	M5×0.8	27	4	14	9	11	9
RBL 6D	40	19	35.5	M6×1	30	5	14	10	13	11
RBL 8D	48	23	42.5	M8×1.25	36	5	17	12.5	16	14
RBL 10D	57	27	50.5	M10×1.25	43	6.5	21	15	19	17
RBL 10BD	57	27	56.5	M10×1.5	43	6.5	21	15	19	17
RBL 12D	66	31	57.5	M12×1.25	50	6.5	25	17.5	22	19
RBL 12BD	66	31	64.5	M12×1.75	50	6.5	25	17.5	22	19
RBL 14D	75	35	73.5	M14×1.5	57	8	26	20	25	22
RBL 14BD	75	35	79.5	M14×2	57	8	26	20	25	22
RBL 16D	84	39	79.5	M16×1.5	64	8	32	22	27	22
RBL 16BD	84	39	85.5	M16×2	64	8	32	22	27	22
RBL 18D	93	44	90	M18×1.5	71	10	34	25	31	27
RBL 20D	99	44	90	M20×1.5	77	10	35	27.5	34	30
RBL 22D	109	50	95	M22×1.5	84	12	41	30	37	32

Note) The model numbers in dimmed type indicate semi-standard types. We recommend using model BL on B-836 .

[Material]

Holder : High strength zinc alloy
(see A-926)
Ball shank : Lightly Carburized Carbon Steel Ball:
650 Hv or higher
Shank S35C
Chromate treatment
Boot : NBR special synthetic rubber

[Spherical Clearance]

Perpendicular to the axis: 0.02 to 0.06mm
Axial direction : 0.3mm or less

[Tolerance of the Mating Hole of the Ball Shank]

H10 is recommended.

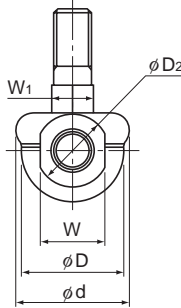
Model number coding

RBL10 D L

Model number

With boot attached

Left-hand thread



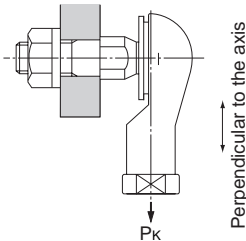
Unit: mm

Ball shank dimensions							Boot d	Eccen- tricity σ	Ball diameter Da	Permissible tilt angles $2\theta^\circ$	Applied static load Cs N	Yield-point strength Pk N	Mass g
d2 h9	M1	M2 ± 0.3	ℓ_1	W1 0 -0.3	d4								
5	21	10	8	7	9	19	1	11.112	45	9220	2250	24	
6	26	11	11	8	10	20	1.2	12.7	45	12100	3530	37	
8	31	14	12	10	12	24	2	15.875	45	19100	6570	67	
10	37	17	15	11	14	30	2.5	19.05	45	27500	10700	110	
10	43	17	21	11	14	30	2.5	19.05	45	27500	10700	113	
12	42	19	17	17	19	32	2	22.225	45	37500	16400	165	
12	49	19	24	17	19	32	2	22.225	45	37500	16400	170	
14	56	21.5	22	17	19	38	2	25.4	45	48900	19800	255	
14	62	21.5	28	17	19	38	2	25.4	45	48900	19800	260	
16	60	23.5	23	19	22	44	2	25.4	35	48900	26900	335	
16	66	23.5	29	19	22	44	2	25.4	35	48900	26900	340	
18	68	26.5	25	20	23	48	4.5	28.575	35	61900	33300	465	
20	68	27	25	24	29	50	2	28.575	35	61900	45900	540	
22	70	28	26	24	27	54	5	31.75	27	75400	48000	715	

Note) The permissible tilting angle of types without boot are greater by approximately 5° .

[Yield-Point Strength]

It indicates the strength in the direction shown in the figure below.



[Lubrication]

Lithium soap group grease No. 2 is contained in the boot.

[Identification of Left-hand Thread]

If the female threading is left-hand, symbol "L" is added. The actual product is marked with symbol "L" on the wrench flat.